

# **DEFORMATION OF INTERNALLY PRESSURIZED HOLLOW CYLINDER OF A VULCANIZED RUBBER MATERIAL.**

## **Abstract**

The deformation of internally pressurized hollow cylinder made of vulcanized rubber material is considered. The analysis of the deformation resulted second order ordinary differential equation which sought for D operator Method of solution for the determination of displacement and stresses. Appropriate boundary conditions are set up in determining the constants involved in the solution. A closed solution for the displacement and stresses at any cross section of the cylinder was achieved.

Keywords: Vulcanized rubber, displacement, deformed radius, shear stresses and Hollow cylinder.

## **1. Introduction**

Cylindrical materials such as rubber tubes, have gain keen interest in the recent times because of their numerous applications in various spheres of life. Cylindrical materials such as tyres, rods, hydraulic hoses, wires, shocks, tubes Seals, vibration absorbers their mechanical properties play important role in their usage. Applications in engineering field, cylindrical tubes are subject to internal pressures and as a result, they undergo finite deformations. Before the analysis of this problem was done only on Small deformations with the assumption that, the

material was linear elastic but for the finite deformations, the prediction results not accurate. Through studies, it is well known that, rubber- like materials of various shapes show non-linear Property (behaviour). Therefore, a better understanding and knowledge of deformations mechanism of numerous structures and materials under different loading conditions must be known due to a great important to materials testing and products development.

The analysis of the deformation of internally pressurized hollow cylinder of a vulcanized rubber material is considered. The aim of the analysis is to determine the displacements and stresses caused by the internal pressure at any cross section of the hollow cylinder. The Vulcanized rubber which is a natural rubber mixed with sulphur during the processes of vulcanization. The sulphur added to the natural rubber increases the shear modulus of the rubber. Erumaka (1) worked on internally pressurized vulcanized rubber where he obtained a non trivial solution for the displacement. Ejike and Erumaka (2) worked on deformation of a rotating circular cylinder made of Blatz-ko material. Anani and Gholamhosein(3) worked on “spherical material, Stress analysis of thick pressure vessel composed of incompressible hyperelastic materials where Neo Hookean strain energy function was used to determine the stress and displacement of spherical shell that is axisymmetric radially deformed under internal and external pressure. Exact solutions were derived for stress and stretch in a thick hyperelastic spherical shell

and the effect of the structure parameter for different examples was discussed". Chung et al (4) analyzed the deformation of internally pressurized hollow cylinder and spheres for Blatz-ko type of compressible elastic material. The results showed that, when the ratio of the outer undeformed radius to the inner undeformed is higher than the critical value, the shear bifurcation occurs before the maximum pressure is reached, while the reverse occurs when the ratio is lower than the critical value. Huang [5] worked on finite displacement of a hollow sphere under internal and external pressures. Aani and Rahimi (6) investigated the displacement and stresses of axisymmetric radial deformation of the shell. They used Neo-Hookean strain energy function to obtain the behaviour of the material. The results presented show that the outer and inner radius is an important parameter which can be mirrored to some applications in order to control the stresses. Aani and Rahimi (7). determined the stability of internally pressurized thick-walled spherical and cylindrical shells made of functionally graded incompressible. Kulcu (8) investigated a new strain energy function in order to describe the hyperelastic behaviour of rubber-like materials under various deformation. The strain energy function represents an invariant based model which has two material constants. This model was tested with the experimental data of vulcanized rubbers, collagen and fibrin just like Levinson and Burgess did [14]. The parameters constants were kept constant when placed under certain types of

loads. It was observed that there is an agreement between the model and the experimental data for all materials. Darijani and Bahremen (9) used polynomial hyperelastic models to obtain a closed form solution for analyses of rubbery solid circular cylinder. Robert et al (10) with “the use of neo-Hookean and the Mooney–Rivlin models found the strain energy function for isotropic incompressible solids demonstrating a linear relationship between shear stress and amount of shear, and between torque and amount of twist, when subject to large simple shear or torsion deformations”. Gao (11) in his work titled “Elasto-plastic analysis of an internally pressurized thick-walled cylinder using a strain gradient plasticity theory. The numerical data was demonstrated that the classical plasticity-based solution and the gradient plasticity-based solution predict almost identical results. Fracture mechanics analysis of cylindrical pressure vessels was carried out”. Nabham et. al., (12) study the effect of the stress generated for an internally pressurized thick walled cylinders containing an internal radial hole using finite element method. His work shown that hoop stress increases due to increase of the hole parameter, diameter and depth. Moreover, the characterizations of notch may be used to determine the maximum stress limit. Darijani and Bahremen (13) used polynomial hyperelastic models to obtain a closed form solution for analyses of rubbery solid circular cylinder. Anani and Gholamhosein (14) worked on spherical material, Stress analysis of thick pressure vessel composed of incompressible hyperelastic

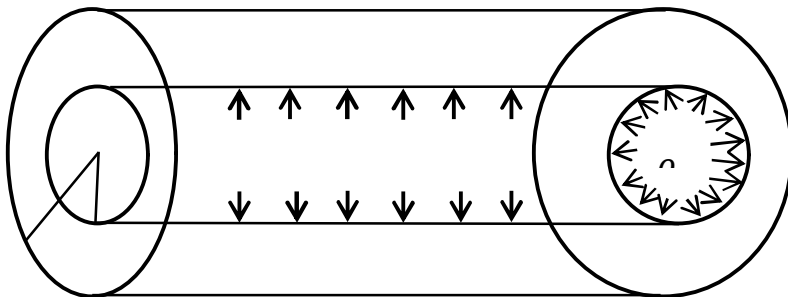
materials where Neo Hookean strain energy function was used to determine the stress and displacement of spherical shell that is axisymmetric radially deformed under internal and external pressure. Elkholy et. al (15) study on “Finite Element Analysis of Stresses Caused by External Holes in Hydraulic Cylinders. In this present paper we sought for a closed solution using D-operator method of solution of second order ordinary differential equation for the determination of stresses and displacement across a hollow cylindrical pipe made of vulcanized rubber material”.

## 2. Formulation of the deformation equation

Let consider an open region  $D_0 = \{(R, \theta, Z) : a < R < b, 0 < \theta < 2\pi\}$  denote the cross section of a right circular pipe with inner radius  $a$  and outer radius  $b$  in its undeformed configuration. The pipe is subjected to a uniform internal pressure of magnitude  $p$ . The resulting deformation is a one to one axisymmetric deformation which maps the point with cylindrical polar coordinate  $(R, \theta, Z)$  in the undeformed configuration  $D_0$  to the point  $(r, \theta, z)$  in the deformed region  $D$  such that

$$r = r(R), \quad \theta = \theta, \quad z = Z$$

where  $r(R) \in C^2[a, b]$  is to be obtained



The deformation gradient tensor  $F$  for equation (1) is given as

$$\bar{F} = \begin{pmatrix} \frac{\partial r}{\partial R} & \frac{1}{R} \frac{\partial r}{\partial R} & \frac{\partial r}{\partial Z} \\ r \frac{\partial \theta}{\partial R} & \frac{r}{R} \frac{\partial \theta}{\partial R} & r \frac{\partial \theta}{\partial Z} \\ \frac{\partial z}{\partial R} & \frac{1}{R} \frac{\partial z}{\partial R} & \frac{\partial z}{\partial Z} \end{pmatrix} = \begin{pmatrix} r_R & 0 & 0 \\ 0 & \frac{r}{R} & 0 \\ 0 & 0 & 1 \end{pmatrix} \quad (2)$$

The Left Cauchy-Green deformation gradient tensor  $B$  associated with (1) is given as

$$\bar{B} = \bar{F} \bar{F}^T = \begin{pmatrix} r_R & 0 & 0 \\ 0 & \frac{r}{R} & 0 \\ 0 & 0 & 1 \end{pmatrix} \begin{pmatrix} r_R & 0 & 0 \\ 0 & \frac{r}{R} & 0 \\ 0 & 0 & 1 \end{pmatrix} = \begin{pmatrix} (r_R)^2 & 0 & 0 \\ 0 & (\frac{r}{R})^2 & 0 \\ 0 & 0 & 1 \end{pmatrix} \quad (3)$$

$$\bar{B}^2 = \bar{B} \cdot \bar{B} = \begin{pmatrix} (r_R)^2 & 0 & 0 \\ 0 & (\frac{r}{R})^2 & 0 \\ 0 & 0 & 1 \end{pmatrix} \begin{pmatrix} (r_R)^2 & 0 & 0 \\ 0 & (\frac{r}{R})^2 & 0 \\ 0 & 0 & 1 \end{pmatrix} = \begin{pmatrix} (r_R)^4 & 0 & 0 \\ 0 & (\frac{r}{R})^4 & 0 \\ 0 & 0 & 1 \end{pmatrix}$$

The three principal strain invariants  $I_1, I_2$ , and  $I_3$  given as

$$I_1 = \text{trace } \bar{B}, I_2 = \frac{1}{2}[(\text{tr } \bar{B})^2 - \text{tr } \bar{B}^2], \quad I_3 = \det \bar{B}$$

$$I_2 = \frac{1}{2}[(\text{tr } \bar{B})^2 - \text{tr } \bar{B}^2] = \frac{1}{2} \left[ \left( (r_R)^2 + \left( \frac{r}{R} \right)^2 + 1 \right)^2 - ((r_R)^4 + \left( \frac{r}{R} \right)^4 + 1) \right]$$

$$I_1 = \text{tr } \bar{B} = (r_R)^2 + \left( \frac{r}{R} \right)^2 + 1, \quad I_2 = \left( \frac{r r_R}{R} \right)^2 + (r_R)^2 + \left( \frac{r}{R} \right)^2, \quad I_3 = \det \bar{B} = \left( \frac{r r_R}{R} \right)^2 \quad (4)$$

Where  $W(I_1, I_2, I_3)$  is the strain energy function and  $W_i = \frac{\partial W}{\partial I_i}, i = 1, 2, 3$ .

Here we consider compressible isotropic elastic vulcanized rubber material characterized by the elastic potential

$W(I_1, I_3) = \frac{\mu}{2} \left[ I_1 - 3I_3^{\frac{1}{2}} \right] + \frac{1}{2} I_3^{\frac{1}{2}}$ , where  $\mu > 0$  (a constant) is the shear modulus for infinitesimal deformation.

$$\frac{\partial W}{\partial I_1} = \frac{\mu}{2}, \quad \frac{\partial W}{\partial I_2} = 0, \quad \frac{\partial W}{\partial I_3} = I_3^{-\frac{1}{2}} \left[ \frac{1-3\mu}{4} \right] = k_1 I_3^{-\frac{1}{2}}. \quad \text{where } k_1 = \frac{1-3\mu}{4}$$

**3. Stress tensor  $\tau$ :** The stress tensor for compressible vulcanized rubber material is given by

$$\tau = \varphi_0 I + \varphi_1 \bar{B} + \varphi_{-1} \bar{B}^{-1} \quad (5)$$

$$\varphi_0 = 2I_3^{-\frac{1}{2}} [I_2 W_2 + I_3 W_3] = 2I_3^{\frac{1}{2}} W_3 = 2k_1 = \frac{1-3\mu}{2} = k_2$$

$$\varphi_1 = 2I_3^{-\frac{1}{2}} W_1 = \frac{\mu R}{r_R r}, \quad \varphi_{-1} = -2I_3^{\frac{1}{2}} W_2 = 0$$

Equation (5) reduces to

$$\tau = \varphi_0 I + \varphi_1 \bar{B}$$

$$\tau = k_2 \begin{pmatrix} 1 & 0 & 0 \\ 0 & 1 & 0 \\ 0 & 0 & 1 \end{pmatrix} + \frac{\mu R}{r_R r} \begin{pmatrix} (r_R)^2 & 0 & 0 \\ 0 & \left(\frac{r}{R}\right)^2 & 0 \\ 0 & 0 & 1 \end{pmatrix} \quad (6)$$

In components form of the polar cylindrical material

$$\tau = \begin{pmatrix} \tau_{rr} & \tau_{r\theta} & \tau_{rz} \\ \tau_{\theta r} & \tau_{\theta\theta} & \tau_{\theta z} \\ \tau_{zr} & \tau_{z\theta} & \tau_{zz} \end{pmatrix} \quad (7)$$

Comparing (6) and (7), we have

$$\tau_{rr} = k_2 + \frac{\mu R r_R}{r} \quad (8.1)$$

$$\tau_{\theta\theta} = k_2 + \frac{\mu r}{r_R R} \quad (8.2)$$

$$\tau_{zz} = k_2 + \frac{\mu R}{r_R r} \quad (8.3)$$

$$\tau_{\theta r} = \tau_{r\theta} = \tau_{zr} = \tau_{rz} = \tau_{z\theta} = \tau_{\theta z} = 0 \quad (8.4)$$

where  $k_2 = \frac{1-3\mu}{2}$  and  $a < r < b$

#### 4. Equation of Equilibrium

The equilibrium equation is given by

$$\text{Div} \bar{T} = 0 \quad (9)$$

In component form, we have

$$\frac{\partial \tau_{rr}}{\partial r} + \frac{1}{r} \frac{\partial \tau_{r\theta}}{\partial \theta} + \frac{\partial \tau_{rz}}{\partial z} + \frac{1}{r} (\tau_{rr} - \tau_{\theta\theta}) + B_r = 0 \quad (10.1)$$

$$\frac{\partial \tau_{\theta r}}{\partial r} + \frac{1}{r} \frac{\partial \tau_{\theta\theta}}{\partial \theta} + \frac{\partial \tau_{\theta z}}{\partial z} + \frac{2}{r} \tau_{r\theta} + B_\theta = 0 \quad (10.2)$$

$$\frac{\partial \tau_{zr}}{\partial r} + \frac{1}{r} \frac{\partial \tau_{z\theta}}{\partial \theta} + \frac{\partial \tau_{zz}}{\partial z} + \frac{1}{r} \tau_{zr} + B_z = 0 \quad (10.3)$$

where  $B_r, B_\theta$  and  $B_z$  are components of the body forces in  $r, \theta$  and  $z$  vectors

respectively. In the absence of body force and the non-zero component of

equilibrium equation is the radial component given by

$$\frac{d\tau_{rr}}{dr} + \frac{1}{r} \frac{d\sigma_{r\theta}}{d\theta} + \frac{d\tau_{rz}}{dz} + \frac{1}{r} (\tau_{rr} - \tau_{\theta\theta}) = 0 \quad (11)$$

Since  $\frac{d\tau_{r\theta}}{d\theta} = 0$ ,  $\frac{d\tau_{r\theta}}{d\theta} = 0$  then (11) becomes

$$\frac{d\tau_{rr}}{dr} = \frac{1}{r} (\tau_{\theta\theta} - \tau_{rr})$$

$$\frac{\partial \tau_{rr}}{\partial r} + \frac{1}{r} (\tau_{rr} - \tau_{\theta\theta}) = 0 \quad (12)$$



Substituting (8) in (12) we have

$$\frac{\partial}{\partial R} \left( \frac{\mu R r_R}{r} \right) \frac{\partial R}{\partial r} + \frac{1}{r} \left( \frac{\mu R r_R}{r} - \frac{\mu r}{r_R R} \right) = 0$$

$$\left( \frac{\mu r_R}{r} - \frac{\mu (r_R)^2 R}{r^2} + \frac{R \mu r_{RR}}{r} \right) \left( \frac{1}{r_R} \right) + \frac{1}{r} \left( \frac{\mu R r_R}{r} - \frac{\mu r}{r_R R} \right) = 0$$

$$\mu (R r_R + R^2 r_{RR} - r) = 0$$

$$\mu \neq 0, \quad R r_R + R^2 r_{RR} - r = 0$$

$$\text{Therefore} \quad R^2 r_{RR} + R r_R - r = 0 \quad (13)$$

$$\text{Let } R = e^z, \quad z = \log R$$

$$\frac{dr}{dR} = \frac{dr}{dz} \frac{dz}{dR} = \frac{1}{R} \frac{dr}{dz}$$

$$R \frac{dr}{dR} = \frac{dr}{dz} \quad (14)$$

$$\frac{d^2 r}{dR^2} = \frac{1}{R^2} \left( \frac{d^2 r}{dz^2} - \frac{dr}{dz} \right)$$

$$\text{Therefore } R^2 \frac{d^2 r}{dR^2} = \left( \frac{d^2 r}{dz^2} - \frac{dr}{dz} \right) \quad (15)$$

Using (14) and (15), (13) becomes

$$\left( \frac{d^2 r}{dz^2} - \frac{dr}{dz} \right) + \frac{dr}{dz} - r = 0$$

$$\frac{d^2 r}{dz^2} - r = 0$$

$$\text{Let } \frac{d}{dz} = D$$

Then (7) becomes

$$(D^2 - 1)r = 0 \quad (16)$$

The auxillary equation of equation (16) is given as

$$m^2 - 1 = 0$$

$$m = \pm 1$$

$$r(R) = A_1 e^z + A_2 e^{-z}$$

$$r(R) = A_1 e^{\log R} + A_2 e^{-\log R}$$

$$r(R) = A_1 R + \frac{A_2}{R} \quad (17)$$

## 5. Boundary conditions

The pipe is subjected to a uniform internal pressure of magnitude  $\rho$ , that is

$\tau_{rr} = -\rho$  which results to the boundary conditions of the form

$$r(a) = -\varphi \text{ and } r(b) = 0 \quad (18)$$

Using equation (18) in equation (17), we have equations (19) and (20) given below as

$$\varphi = A_1 a + \frac{A_2}{a} \quad (19)$$

$$0 = A_1 b + \frac{A_2}{b} \quad (20)$$

Solving (19) and (20) simultaneously we obtain

$$A_1 = \frac{a\varphi}{b^2 - a^2}, \quad \text{and} \quad A_2 = \frac{-a\varphi b^2}{b^2 - a^2}$$

Therefore the displacement  $r(R)$  is given as

$$r(R) = \frac{a\varphi R}{b^2 - a^2} - \frac{a\varphi b^2}{(b^2 - a^2)R} \quad (21)$$

$$\begin{aligned} \dot{r} &= \frac{a\varphi}{b^2 - a^2} \\ &+ \frac{a\varphi b^2}{(b^2 - a^2)R^2} \end{aligned} \quad (22)$$

Using equation (21) and (22) in (8) we obtain the components of the stresses.

## 6. Maximum displacement

$$\dot{r} = 0 \text{ and } R = \pm ib, \quad \ddot{r} = \frac{-2a\varphi b^2}{(b^2 - a^2)R^3}$$

The maximum displacement may not be achievable since  $R = \pm ib$

## 7. Result and discussion

Let  $\varphi = 0.75mm$ ,  $a = 10mm$ ,  $b = 30mm$ ,  $\mu = 0.0006Gpa$  in (21), (22) and (8.1) to obtain Table 1

**Table 1: The table shows values of the initial radius in mm and the corresponding values of the current radius and displacement gradient.**

R	r(R)	$\dot{r}$	$\tau_{rr} = -\rho$
10	-0.7500	0.09375	-0.49910
12	-0.5906	0.06797	-0.49910
14	-0.4714	0.05242	-0.49910
16	-0.3773	0.04233	-0.49910
18	-0.3000	0.03517	-0.49910
20	-0.2344	0.03047	-0.49910
22	-0.1773	0.02681	-0.49910
24	-0.1266	0.02402	-0.49910
26	-0.0808	0.02186	-0.49910
28	-0.0388	0.02014	-0.49910
30	-0.0000	0.01875	-0.49910

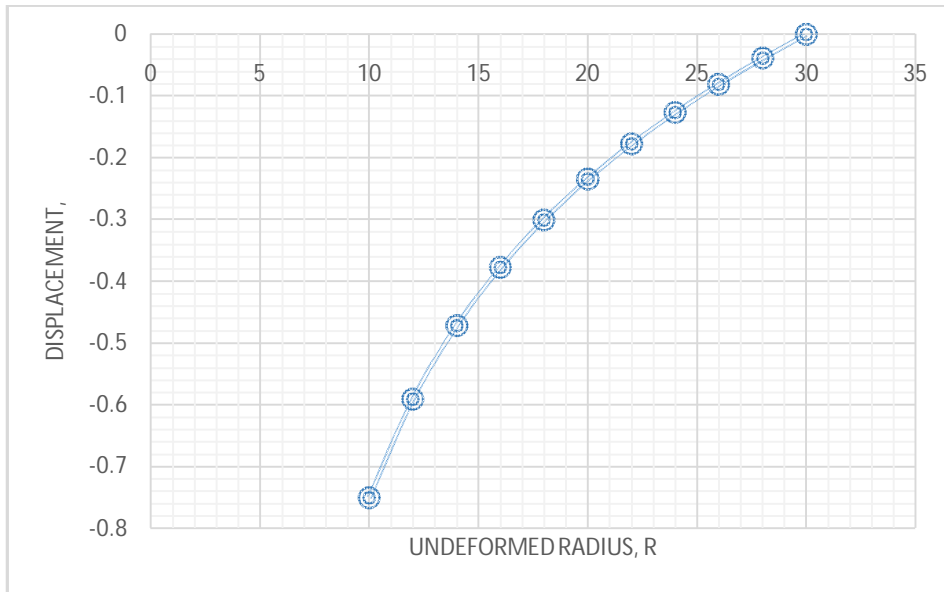


Figure 1: A graph of equation (21) with undeformed radius plotted against displacement.

As the radius of the hollow cylinder made of vulcanized rubber increases the displacement of the material increases.

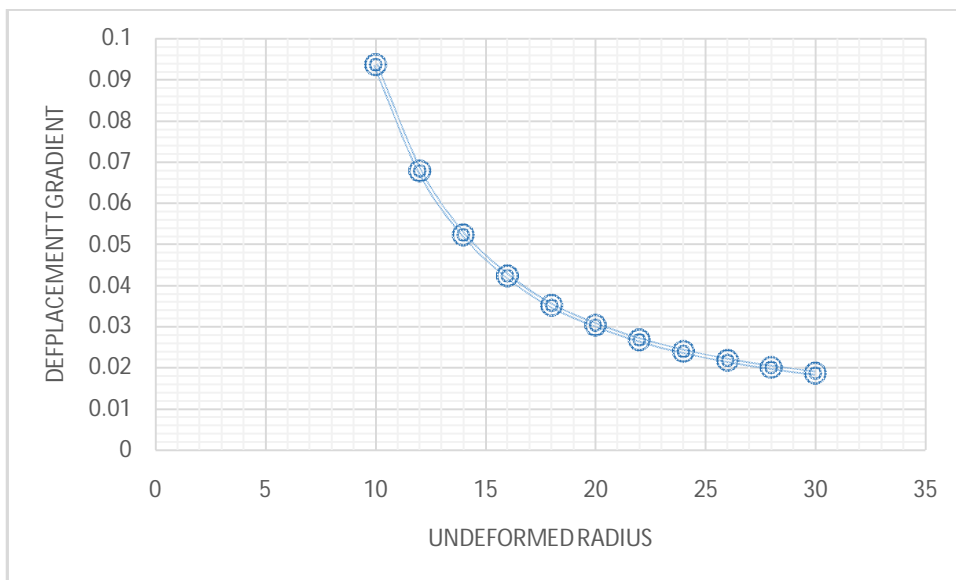


Figure 2: A graph of equation (22) with undeformed radius plotted against displacement gradient.

As the radius of the hollow cylinder made of vulcanized rubber increases the displacement gradient decreases.

## 7. Conclusion

This present work establish a closed solution for the displacement and stresses as resulting of internally pressurized hollow cylindrical pipe made of vulcanized rubber material. A graph of undeformed radius against displacement is plotted as shown in figure 1. Equation (21) gives the displacement. The components of the stress at any cross section of the hollow cylindrical pipe made of vulcanized rubber material was obtained. It was observed that as the radius of the hollow cylinder made of vulcanized rubber increases the deformation gradient decreases and the radius of the hollow cylinder made of vulcanized rubber increases with increase in the displacement of the material. At maximum displacement  $\dot{r} = 0$ , we have that  $R = \pm ib$ . This can be interpreted that maximum displacement may not be reached until collapse of the cylindrical tube that is no carrying capacity of material. The loads have to be regulated to avoid bread down of the material.

Disclaimer (Artificial intelligence)

Option 1:

Author(s) hereby declare that NO generative AI technologies such as Large Language Models (ChatGPT, COPILOT, etc.) and text-to-image generators have been used during the writing or editing of this manuscript.

Option 2:

Author(s) hereby declare that generative AI technologies such as Large Language Models, etc. have been used during the writing or editing of manuscripts. This explanation will include the name, version, model, and source of the generative AI technology and as well as all input prompts provided to the generative AI technology

Details of the AI usage are given below:

- 1.
- 2.
- 3.

## References

- (1) Erumaka U. N (2009): Deformation of internally pressurized pipe of a class of compressible vulcanized rubber material. Journal of Mathematical Science 20 (3), 313-317.
- (2) Ejike U. B. C. O and Erumaka U. N (2006): Finite deformation of a rotating circular cylinder of Blatz-ko material. Journal of Mathematical Science 17 (1), 63-71.
- (3) Anani Y. and Gholamhosein R. (2015); Stress analysis of thick pressure vessel composed of incompressible hyperelastic materials; International Journal of Recent advances in Mechanical Engineering (IJMECH), Vol.4, No.3
- (4) Chung, D.T., Horgan, C.O., Abeyaratne, R. (1986): The finite deformation of Internally pressurized hollow cylinder and spheres for in class of compressible elastic materials. International Journal of Solids and Structural. 22(12): pg. 1557-1570.
- (5) Huang, Z., On the Finite Displacement Problem of a Hollow Sphere Under Internal and External Pressures. Applied Mathematics and Mechanics, 6, 1097-1102.

- (6) Aani, Y. and G. H. Rahimi (2015): Stress analysis of thick pressure vessel composed of incompressible hyperelastic materials, *International Journal of Recent Advances in Mechanical Engineering*, 4 (3): 19-37.
- (7) Aani, Y. and G. H. Rahimi (2018): On the stability of internally pressurized thick-walled spherical and cylindrical shells made of functionally graded incompressible hyperelastic material. *Latin American Journal of Solids and Structures*, 15 (4).
- (8) Kulcu, I. D., (2019): A hyperelastic constitutive model for rubber-like materials. *Archive of Applied Mechanics*, 1-8.
- (9) Darijani H and BahremenM (2015): New polynomial strain energy function; application to rubbery circular cylinders under finite extension and torsion, *Journal of applied polymer science*, Vol 132.
- (10) Robert M., Destrade M. and SaccomandiG.(2016): Strain energy function for isotropic non-linear elastic incompressible solids with linear finite strain response in shear and torsion, *Extreme Mechanics Letters* 9 , 204–206.
- (11) Gao, X.-L. (2003):Elasto-plastic analysis of an internally pressurized thick-walled cylinder using a strain gradient plasticity theory”, *International Journal of Solids and Structures*, VOL.40, pp. 6445–6455.

(12) Nabham A., Mahamed M. K., and Mousa M. O (2018): Study the stress generated for an internally pressurized thick-walled cylinders containing an internal radial hole using FEM. International Journal of Engineering and information system 2(1), 134-141

(13) Darijani H and BahremenM (2015); New polynomial strain energy function; application to rubbery circular cylinders under finite extension and torsion, Journal of applied polymer science, Vol 132.

(14)Anani Y. and Gholamhosein R. (2015); Stress analysis of thick pressure vessel composed of incompressible hyperelastic materials; International Journal of Recent advances in Mechanical Engineering (IJMECH), Vol.4, No.3

(15) Elkholy A.N., Kamel M. A., and Mousa M. O. (2012): Finite Element Analysis of Stresses Caused by External Holes in Hydraulic Cylinders" International Journal of Mechanical Engineering, Vol. 2(2), pp. 105-115.